

Global Motors Industry Co., Ltd

Head office & Changwon factory
14, Yeondeok-ro 9beon-gil, Sungsan-ku, Changwon-shi, Korea
Tel: +82 55 264-4211 , Fax:+82 55 264-0262

Kimhae Factory (Cutting & Warehouse)
231-1, Seobu-ro, Jinyeong-up, Kimhae-shi, Korea
Tel : +82 55 343-8694 , Fax:+82 55 343-8693



Contents



- 1. Introduction**
- 2. Vision & Mission**
- 3. History & Certification**
- 4. Organization**
- 5. Changwon workshop**
- 6. Kimhae workshop**
- 7. Business Area**
- 8. New market development**

1. Introduction

- CEO : Mrs Park Mi-jee
- Established : July 1, 1994
 - Established with name of MACSAN Precision in 1994
 - Changed company's name to GMI in 2010
- Assets : US\$ 5.1 M
- Employees : 21
- Amount of sales : US\$ 7.0 M/year
- Factory(work shop)
 - Changwon head office & factory
Site : 2,079 m², Building :1,650m²
 - Kimhae workshop (cutting & warehouse)
Site :3,300 m² , Building :1,719m²
- Key Business area
 - Parts Machining for Hardox Plates
 - Hardoxwear partner shop
 - . Cutting , Bending, Welding, Machining



2. Vision & Mission

- **The only One-stop leader in Hardox market in Korea (Material, Cutting , Bending, Machining, Welding)**
- **1st Parts supplier in commercial vehicles in Korea**

Leading company in HARDOX Wearpartner

- Leader company in SSAB Wardoxwearpartner
 - ▶ To have expertise in Hardox plate machining
 - ▶ On-site Customer consulting & design supporting.

Installation of the most suitable equipment for Hardox processing

- To install powerful machines for Hardox 550/600 machining.
- One-stop Hardoxwearpartner shop (Adding Fiber Laser M/C and Bending Machine)

Commercial Vehicles(Dump trucks)

- Enlarge production items from 130 item 260items
- Add buyers from 2 buyers to 4 buyers
- Parts development : 27Ton Cargo body

3. History & Certification

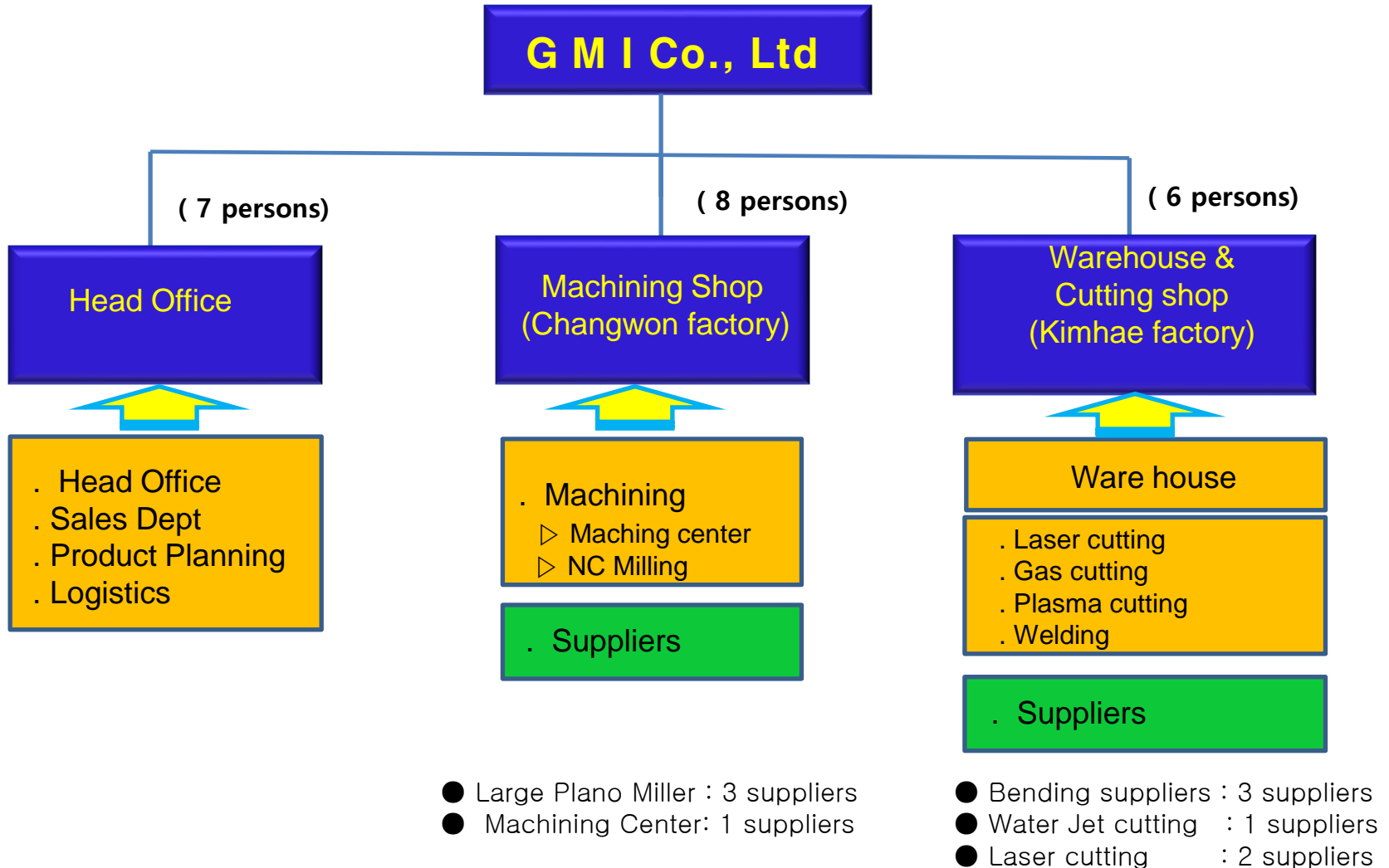
History

- **1994.7** Established with name of **MACSAN Precision Co., Ltd**
- **1997.3** Developed food machineries (5models)
- **2002.7** Sep up new machining factory
- **2003.5** Developed Trucks parts (Volvo trucks)
- Lifting BKT & Hydraulic parts (31 items)
- **2010.3** Company name change to **GMI Co., Ltd**
- **2010.3** Start Electric equipment parts
(Samsung Electrics : Robot hands etc)
- **2010.4** Established Hardox ware shop
- Established Cutting , Bending,Welding factory
- **2010.11** Start precision parts for Volvo
construction equipment Korea (Reduction gear)
- **2010.12** : Set up 2nd cutting factory
- **2011.1~2023.7** : 5 New added Machining center
in Changwon workshop
- **2023.3** : Established new workshop in Kimhae

Certification

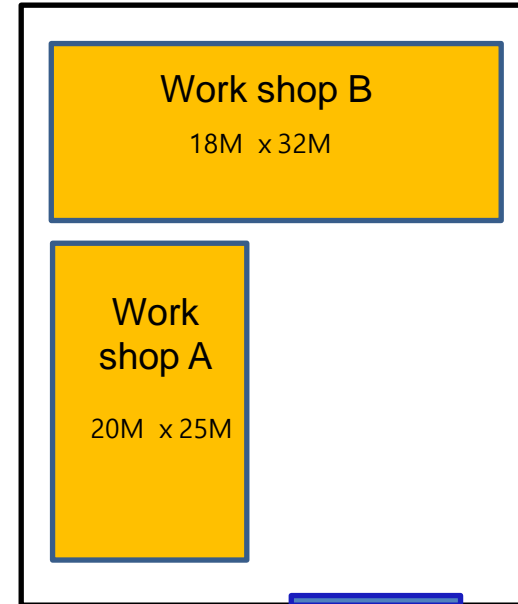
- 2007 ISO 9001 :2008 , KS Q ISO 9001:2009
ISO14001;2008 , KS Q ISO 14001:2009
- 2001 Acquired CE Mark
. Food machineries
- venture Enterprise
- INNOBIZ Enterprise
- 2003 Acquired Clean enterprise certification

4. Organization



5. Changwon Factory (Machining)

Changwon factory (Machining shop)



Factory

- Space Area : 2,079 m²
- Building (A)
 - . 1F : Machining shop :500m²
 - . 2F : Assembly & Head Office :500m²
- Building (B)
 - . Machining shop :576m²



Video show
[. GMI Introduction](#)

Changwon workshop

Machining Shop

Class	Model	Maker	Work table (X, Y, Z)	Unit
Vertical Machining Center	Mynx950/50	Doosan/gear	2500 x 950 x 850	1
	Mynx750/50	Doosan/gear	1525 x 770 x 625	1
	Mynx650/50	Doosan/gear	1270 x 670 x 625	3
	Mynx650/50	Doosan/velt	1270 x 670 x 625	1
	Mynx400/40	Daewoo/velt	800 x 400 x 400	1
	Kv60	Wiea/gear	1200 x 600 x 550	1
	COMBI11	Kiheung/gear	2800 x 1100 x 1200	1
NC Milling Machine	U8S	Doosan/gear	1900 x 800 x 800	1
	COMBI U6S	Kiheung	1600 x 700 x 700	2
NC Turning Lathe	L210A	Wiea/8inch	8 inch	1
	L280	Wiea/10inch	10 inch	1
	SKT300L	Wiea/12inch	12 inch	1
				15

*1) Geared Machine : Strong and more powerful machining



8층 내부 (200평)

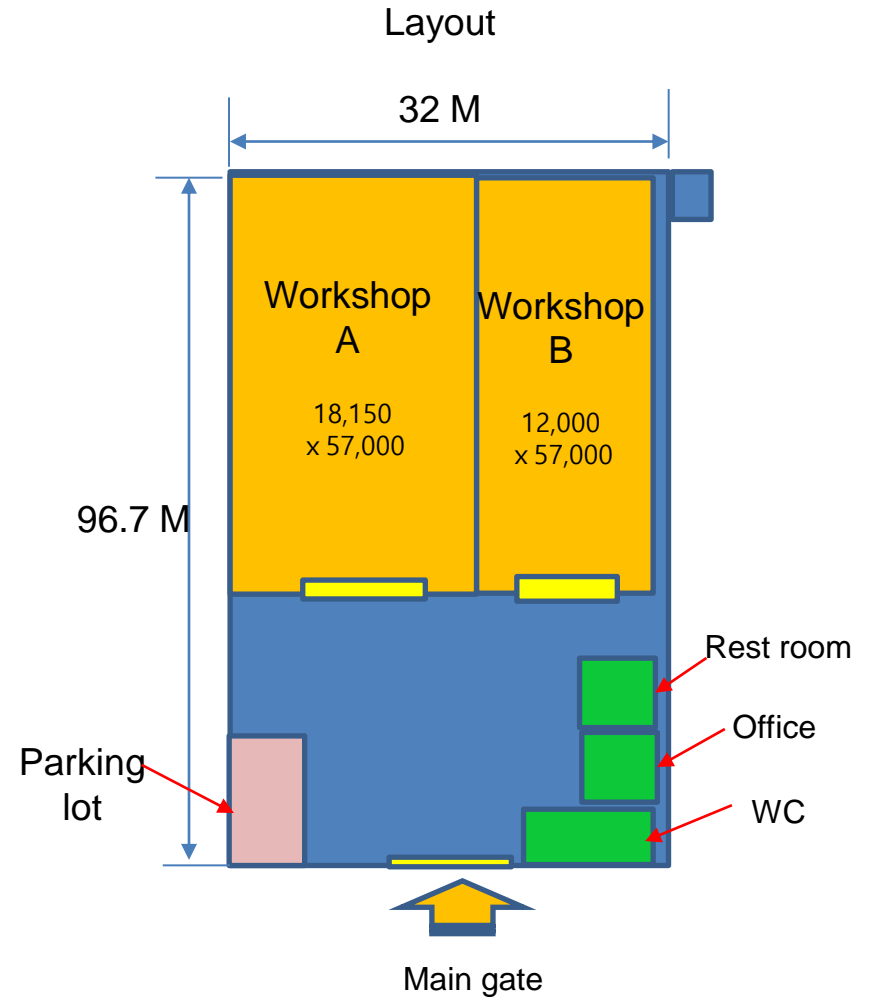
6. KimHae Factory (Cutting shop)

**Kimhae factory
(Warehouse & Cutting shop)**



Factory

- Space Area : 3,166 m²
- Workshop (A)
 - . Laser, Plasma, Gas cutting : 1,035 m²
- Workshop (B)
 - . Warehouse , Welding shop : 684m²



Kimhae workshop

Cutting & Warehouse

Model	Maker	Stroke (X , Y)	Unit
GAS Cutting	HANTO	4000*8000	1
CNC Plasma	ESAB	4000*18000	1
Laser Cutting M/C	TRUMPF 4030	2000*4000	1
Water jet	DS Waterjet	4000*8000	
Bending (Large size)	Gum-bu Bending	1000~3500Ton	
Bending (Middle)	Bu-kyeung Bending	100~300 Ton	
Bending (Small)	Daesan bending	100~250Ton	

■ 4 suppliers for outsourcing
(Trained suppliers for Hardox Plate)



Suppliers Logistics Network

Suppliers' network

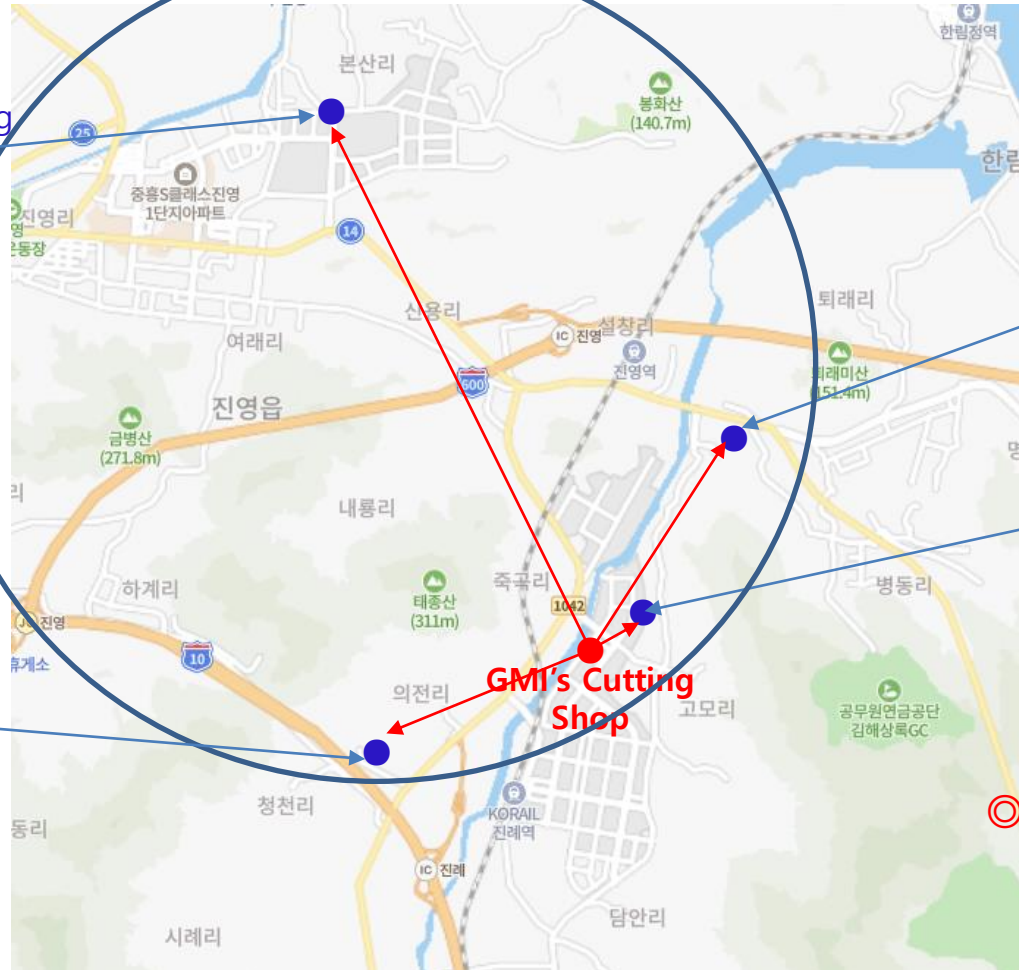
■ Gum-bu Bending
. 6 Km, 20min

■ Bu-kyeung Bending
. 3.5 Km, 12min

■ DS Water Jet
. 2 Km, 8 min

■ Daesan Bending
. 3 Km, 10min

◎ All the suppliers located within 6Km (20Min)



7. Business Area(1)

The leading HARDOX parts consulting company

■ On-site support

- ▶ Design support for customers' Application
 - ☞ **Product design by receiving the actual products.**
- ▶ Consulting & Recommendation for cost saving application
 - ☞ **Recommend the most suitable hardox materials**



Product provided by customer and designed and manufactured by GMI



■ Making royal customers and sustainable management

- ▶ Continuous contact and provision of new information through Internet E-mail
- ☞ **Introduction of new products (HiTemp , HiAce, Tuf) and continuous provision of application cases.**
- ▶ Periodic company visits and company survey updates

7. Business Area(2)

Hardox Specialized Shop (Cutting,Machining,Bending,Welding)

■ Replaced with most powerful Machining Centers (geared type M/C)

- ▶ Powerful Machining for tough, strong and hard materials as like Hardox 600
- ☞ Continuous Development of the most suitable /effective tools capable of machining hardox 600

■ One-stop processing shop for Hardox Plate

- ▶ Cutting (W/jet Laser , Plasma, Gas) →Machining /Bending →Welding
- ☞ New add Fiber Laser Machine (12Kw)
(Cutting Max : 40mm Thickness , by Dec,2023)
- ▶ New establishment of Bending M/C
- ☞ 400~500 Ton Capacity , by Dec 2024)

Video show

- . [Timber blade # 1](#) (도이재)
- . [Hardox600 Blade # 2](#) (고철 가위날)
- . [Hardox 600 blade # 3](#) (Tap 가공)



Geared type M/C



Hx600 50T



Hx600 50T

Hardox 600
(Milling , Drilling ,
Tapping)



Hx600 25T

8. New parts market development

◎ New market development for Hardox HiAce , Hitemp , 500Tuf

■ Hardox HiAce

▶ Customer : Daedyung facilities Co

. As a waste food reprocessing facility manufacturer, all the design of the standard material are currently being changed to HaHiAce, and a pilot production is scheduled for 1 unit by December 2023.

☞ Expected to increase use of HxHiAce 4T,6T in the future (Requirement : 20Ton/1unit)

■ Hardox Hitemp

▶ Customer : Whasung Engineering Co.

. As a POSCO's supplier, sample materials and test parts have been provided, and after testing If product performance is recognized, use is expected to increase.

■ Hardox 500 Tuf

▶ Customer : Jungbu special Construction C.

. Manufacturer of weed and weed removal machine. Currently, Hardox500Tuf 8T,12T are used as rotary cutting blades, and 30,000 to 50,000 pieces are used annually. As a result of the test, the performance is excellent and the life is long. (Requirement : 8T~10Ton/Year)

Thank you