

SSAB

TOOLOX 적용사례 (제철소/발전소)



1. Slag transport truck의 차축

Transporting slag trucks (80 tons), the axles, Q&T 300 HB steel, as well as the axle-trees were worn out due to the high payload.

(슬러지 운반용트럭 , 과부하로 차축 마모)

New axles were made of Toolox 44, Ø 280 mm.

The axle-trees were hard-face welded and milled.

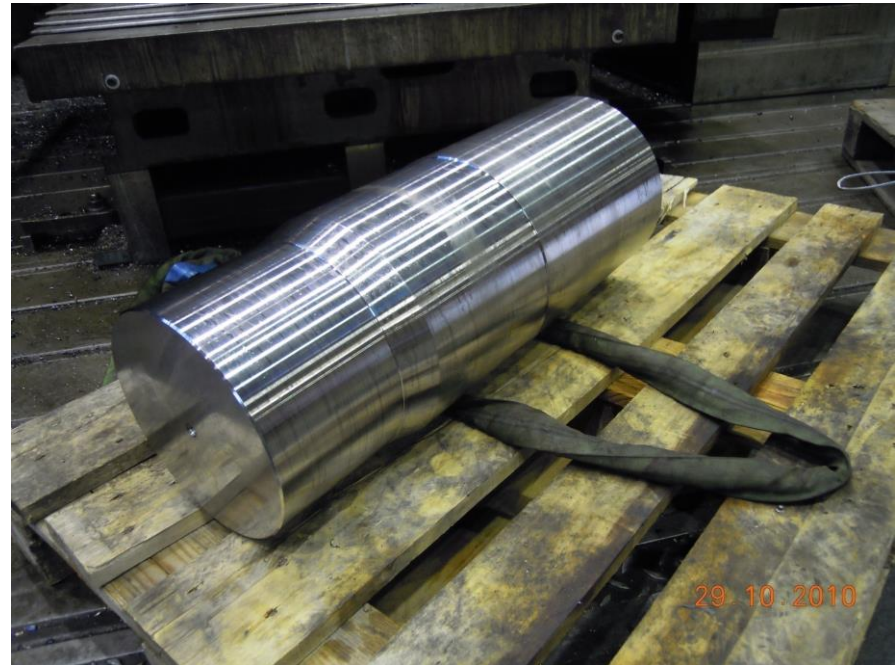
(과거 하드페이싱을 한 재료 사용)

(현재 툴록스 44 , 지름 280mm 사용)

Axles (차축) : Toolox44



Toolox44 , Ø 230



2. Beam made in Toolox 33 for the CC

Support beams for the continuous caster were made in Toolox 33, in total 82 pcs. Toolox was chosen due to the good machineability and dimensional stability.



3. Guide part (Roller & BKT) for cold leveller

The earlier guide parts were hard-face welded and thereafter milled. These are now made in Toolox 44 giving less wear and simplified and faster maintenance.

(과거 하드페이싱 부품에서 Toolox44 로 변경 : 내마모, 취급용이성 때문)

